

# SPRING LOVE

AMOS KOYAMA, AARON BAYMON, JEREMIA WIGGINS, MARKUS JOHNSON,  
PATRICK CONWAY, GARRETT SAWYER, AND LEO TYMESON

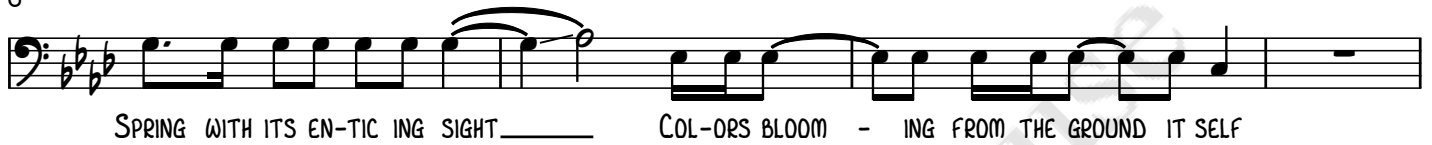
FREELY

Cm7



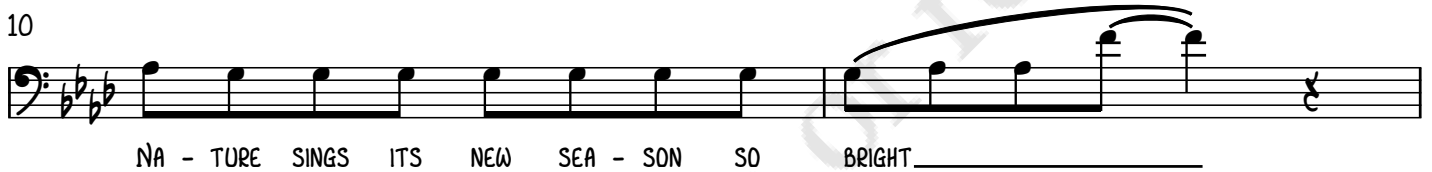
SWIN-DLE IN A BREEZE BRINGS SCENT TO THIS O-DOR-LESS PARCHED HEART

6




SPRING WITH ITS EN-TIC ING SIGHT COL-ORS BLOOM - ING FROM THE GROUND IT SELF

10



NA - TURE SINGS ITS NEW SEA - SON SO BRIGHT

12



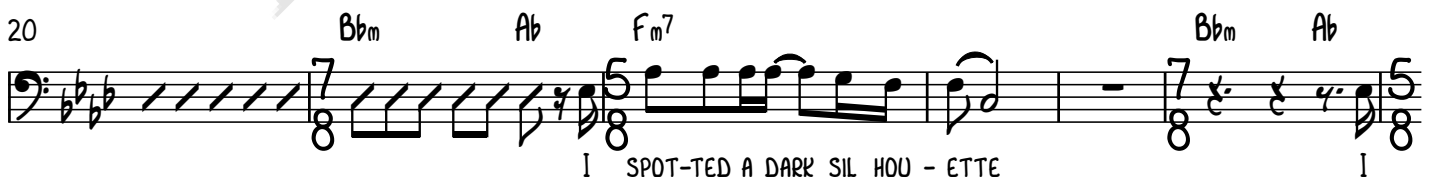
I FOUND LOVE AT FIRST SIGHT

16



I SPOT-TED A DARK SIL HOU - ETTE

20



I SPOT-TED A DARK SIL HOU - ETTE

26



COULD NOT PER-CEIVE IT AS AN AN - I - MAL

30  $Fm7$   $Bbm$   $Ab$

BUT I KNEW HOW IT FELT... DIFF - ERENT

34  $Fm7$   $Eb(SUS4)$

SEE - ING SOME - THING SOUND - ED EX - ACT - LY LIKE

39  $Gb$   $Gbm$   $Db7$

SAK UR - A, MAR - I - GOLDS, TU LIPS AND HY - DRAN - GEAS MY COL - ORS OF LOVE PRO YOU

44  $Cbm$   $Gb$   $Gbm$

JECT ED ON THEIR PET - ALS DREAMS OF FOR - GOT TEN LOVE DELVE

50  $Db7$   $Gbm$

IN THE DY - ING LEAVES OF MY PRE - CIOUS ROSE

55  $Fm7$   $Bbm$   $Ab$   $Fm7$

AL - THOUGH YOU MAY NOT STAND OUT IN SPRING

61  $Bbm$   $Ab$   $Fm7$   $Bbm$   $Ab$

YOU SHALL AL - WAYS HOLD MEM - O - RIES

67  $Fm7$   $Bbm$   $Ab$   $Fm7$

MO - MENTS WHERE HE SPOKE DIFF - ERENT SEE - ING

72 Bbm Eb(SUS4)

— SOME - THING — LOOK - ING EX - ACT - LY LIKE

76 Fm7 Bbm Ab 4X

— SOME - THING — LOOK - ING EX - ACT - LY LIKE

80 Fm7 Bb5 Eb Abm Bbm9 ♩ = 94

— SOME - THING — LOOK - ING EX - ACT - LY LIKE

86 Fm7 Bbm7 Eb7

— SOME - THING — LOOK - ING EX - ACT - LY LIKE

91 Abmaj7 G#7

— SOME - THING — LOOK - ING EX - ACT - LY LIKE

96 Fm7 Bbm7

— SOME - THING — LOOK - ING EX - ACT - LY LIKE

100 Fm7 Bbm7

— SOME - THING — LOOK - ING EX - ACT - LY LIKE

104 Eb7 Abmaj7

— SOME - THING — LOOK - ING EX - ACT - LY LIKE

108 G#7 Fm7

— SOME - THING — LOOK - ING EX - ACT - LY LIKE

112 **Bbm7** **Fm7**  
 NA - TURE SEARCH... I MUST KNOW WHERE HE IS.

116 **Bbm7** **Eb7**  
 I MUST KNOW, FLOW-ER CROWNED LOVE

120 **Abmaj7**  
 WHERE DID YOU PUT MY PAST? I AM LOST

124 **Fm7** **Bbm7**  
 IN THIS FOR - EST OF PINK DE-SCEND-ING DEL-I - CATES,

128 **Fm7** **Bbm7**  
 I MUST KNOW, FOR IN YOU, SPRING, IS WHERE I DIS

132 **Eb7** **Abmaj7**  
 COV-ERED DIS-COV-ERED WHAT TRUE JOY WAS, I

136 **G#7**  
 FOUND MY REA - SON TO BE - LIEVE, TO TRUST,

138 **Fm7** **Bbm7**  
 3 FIN-AL-LY UN-DER STOOD WHAT A ROS-E'S SCENT MEANT, 3 FIN-AL-LY UN-DER

142 **Fm7** **Bbm7**  
 STOOD THE MEM-O - RY OF THE SAR-UR - A, I UN-DER-STOOD

146  $E_b7$   $A_b m a3 7$

THE MEM-O-RY OF THE SAR-UR-A, I UN-DER-STOOD

150

WHAT IT WAS TO HAVE LOVE...

$\text{♩} = 84$   
154  $D_b m a3 7$   $C7$   $Fm7$   $E_b m7$   $A_b7$

158  $B_b m7$   $D_b/C$   $D_b$   $B_b7/D$   $E_b$   $C7/E$

162  $Fm$   $B_b m7$

SPRING, A CAR - RI - ER OF PAS - SIONS AND RO -

164  $E_b7$   $D\#7$   $G^{\circ}$   $G_b$

MAN - TI CI - SMS, TELL ME WHAT YOU DID TO MY

166  $Fm$   $B_b m7$

LOVE, DID YOU BUR - Y HIM IN THE DEPTHS OF YOUR ROOTS?

168  $E_b7$   $D\#7$   $G^{\circ}$   $G_b$

DID YOU DROWN HIM IN THE LAKE OF DE -

170  $Fm$   $B_b m7$

SPAIR? SPRING DID YOU CAST HIS SOUL IN - TO THE ROSE YOU GAVE

172 Eb7 Dø7 G° Gb

me? IS THAT WHY, IT NEV - ER WITH -

174 Fm Bbm7

ERS? IS THAT WHY, IT AL - WAYS GLEAMS A

176 Eb7 Dø7 G° Gb

SPAR - KLE OF EL - E - GANCE, WHEN - EV - ER I CATCH MY - SELF CAP - TI - VAT - ED BY ITS

178 Fm Bbm7 Eb7 Dø7 G° Gb

BEAU - TY?

182 Fm Bbm7 Eb7 Abmaj7 G° Gb

186 ♩ = 178 Fm7 Bbm Ab

190 Fm7 Bbm Ab

SPRING, MY FOR - GOT - TEN LOVE,

194 Fm7 Bbm Ab

YOU BROUGHT ME PET - ALS, YOU BROUGHT ME RO - MANCE,

198 Fm7 Bbm Ab

YOUR DE - LIGHT - FUL WIND BROUGHT UP - ON ME SUCH PEACE,

202  $Fm7$   $Bbm$   $Ab$

DIF-FERENT SEE-ING\_\_\_ SOME-THING\_\_\_ SOUND-ING EX-ACT-LY LIKE

206  $Fm7$   $\text{♩} = 92$

YOU

211

SIL-HOU-ETTE WAS YOUR SOUL COM-ING BACK,\_\_\_ IT

215  $Fm7$   $G\flat/F$   $C\flat7/F$   $C\flat maj7/F$

WAS YOUR LAST AT TEMPT TO SEE ME WAS-N'T IT?\_\_\_ YOU

219  $Fm7$   $G\flat/F$   $C\flat7/F$   $C\flat maj7/F$

KNEW\_\_\_ I DREAMED OF SEE-ING YOU IN SPRING, I

223  $Fm7$   $G\flat/F$   $C\flat7/F$   $C\flat maj7/F$

WISHED TO BE BLESSED IN\_\_\_ SPRING,\_\_\_ I

227  $Cm7$   $D\flat6/C$   $G\flat7/C$   $G\flat maj7/C$

WISHED TO HEAR\_\_\_ YOUR\_\_\_ LAST WORDS,\_\_\_

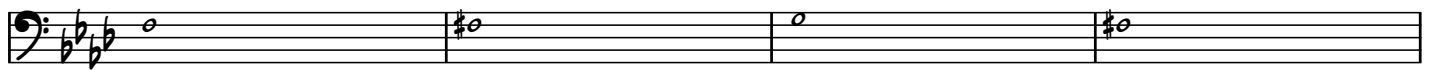
231  $Cm7$   $D\flat6/C$   $G\flat7/C$   $G\flat maj7/C$

UN- DER\_\_\_ THE TREE\_\_\_ OF MY\_\_\_ DREAMS,\_\_\_ I

235  $Cm7$   $D\flat6/C$   $G\flat7/C$   $G\flat maj7/C$

WISHED FOR SO MAN-Y THINGS THAT NEV-ER HAP- PENED,

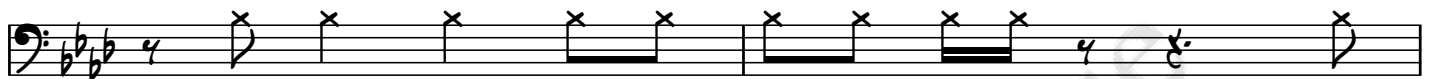
239 ♩ = 142



243 Fm Gb Gm Gb



247 Fm Gb



THE SPRING BREEZE NO LONG - ER BROUGHT ME IN, THE

249 Gm Gb



SUN - LIGHT BURNED MY WITH - ER - ING SOUL, AND THE SOUNDS

251 Fm Gb Gm Gb



— OF NA-TURE BE - WIL - DERED MY HEART, AND AT THE LAST MIN - UTE, AND AT THE LAST MIN - UTE OF

255 Fm Gb Gm



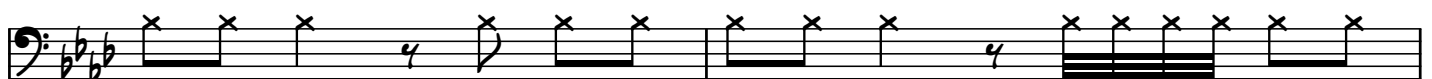
SPRING, YOU DE - CIDE TO SHOW YOUR - SELF, YES IN - DEED YOU — DE - CIDE TO SHOW YOUR - SELF

258 Gb Fm Gb



SHOW YOUR - SELF SHOW YOUR - SELF AF - TER SO LONG, THAT MY MIND FOR - GOT WHAT

261 Gm Gb



PLEAS - URE WAS TO SEE THE GIFT OF YOU CAR - RY - ING THE GIFTS OF

263 Fm Gb Gm Gb



SPRING I GAVE YOU I GAVE TO YOU BUT NOW, YOU ARE TOO — LATE,



267 Fm Gb Gm Gb  
 MY ROSE\_ YOU ARE TOO LATE, MY ROSE I'VE

271 Fm Gb Gm Gb  
 3 AL-READ-Y LOST SO MAN-Y THINGS, AND I CAN-NOT BEAR TO LIVE AN-OTH-ER SEA-SON WITH

275 Fm Gb Gm Gb  
 WHAT I'VE BE-COME, WITH WHAT I'VE BE-COME

279 Fm Gb Gm Gb  
 SPRING, MY\_ DEAR, BUR-Y ME IN RED ROS - ES,

283 Fm Gb Gm Gb  
 BUR - Y ME IN RED ROS - ES,

287 Fm Gb Gm Gb  
 I CAN NOT BEAR TO LIVE WITH AN-OTH-ER SEA-SON WITH WHAT I'VE BE-COME, WITH WHAT I'VE BE-COME

291 Fm Gb Gm Gb  
 WITH WHAT I'VE BE-COME

295 Fm Gb Gm Gb  
 SPRING, MY DEAR,\_ BU - RY\_ ME\_ IN RED ROS - ES,

299 Fm Gb Gm Gb  
 TWID-DLE WITH MY SOUL\_ UN - TIL I CAN-NOT BEAR\_ IT,\_

303 Fm Gb Gm Gb

BREAK MY DREAMS IN - TO RIPPED PET - ALS,

307 Fm Gb Gm Gb

I HAVE ONE MORE THING TO SAY TO YOU IT'S ON - LY TWO WORDS

311 Fm Gb Gm Gb

END YOUR - SELF END YOUR - SELF

315 Fm Gb Gm Gb

END YOUR - SELF

319 Fm Gb Gm Gb

MY DEAR

323 Fm Gb Gm Gb Fm

328 ♩ = 66 B A(ADD9) E(maj7/G#) A(ADD9) E(maj7/G#) A(ADD9)

TAKE CARE BOTH OF YOU, — MAY THE MOON -

334 E(maj7/G#) A(ADD9) E(maj7/G#) A(ADD9)

- TAIN TOPS RE-MIND — YOU\_ OF HOW MY MIND — WAS CLOUD - ED WITH YOU, —

338 E<sup>MAJ7</sup>/G# A(ADD9)

MAY THE SHIN - ING RIV - ER RE - MIND YOU OF THE

340 E<sup>MAJ7</sup>/G# A(ADD9)

TRAN - QUI - NA - TURE THAT WAS A - ROUND US, MAY THE E -

342 E<sup>MAJ7</sup>/G# A(ADD9) G#/F#

TER NAL ROSE... WILT A - LONG WITH WHO I WAS.

346 ♩ = 72 D<sup>b</sup>MAJ7 C7 Fm7 Eb Ab7

350 B<sup>b</sup>m7 Ab<sup>6</sup>/C D<sup>b</sup> D<sup>ø</sup>7 Eb E<sup>o</sup> G<sup>o</sup> F#

354 Fm7 B<sup>b</sup>m7 Eb7 D<sup>ø</sup>7 G<sup>o</sup> G<sup>b</sup>

358 Fm7 B<sup>b</sup>m7 Eb7 Ab<sup>MAJ7</sup> G<sup>o</sup> G<sup>b</sup> 3X Fm<sup>9</sup>